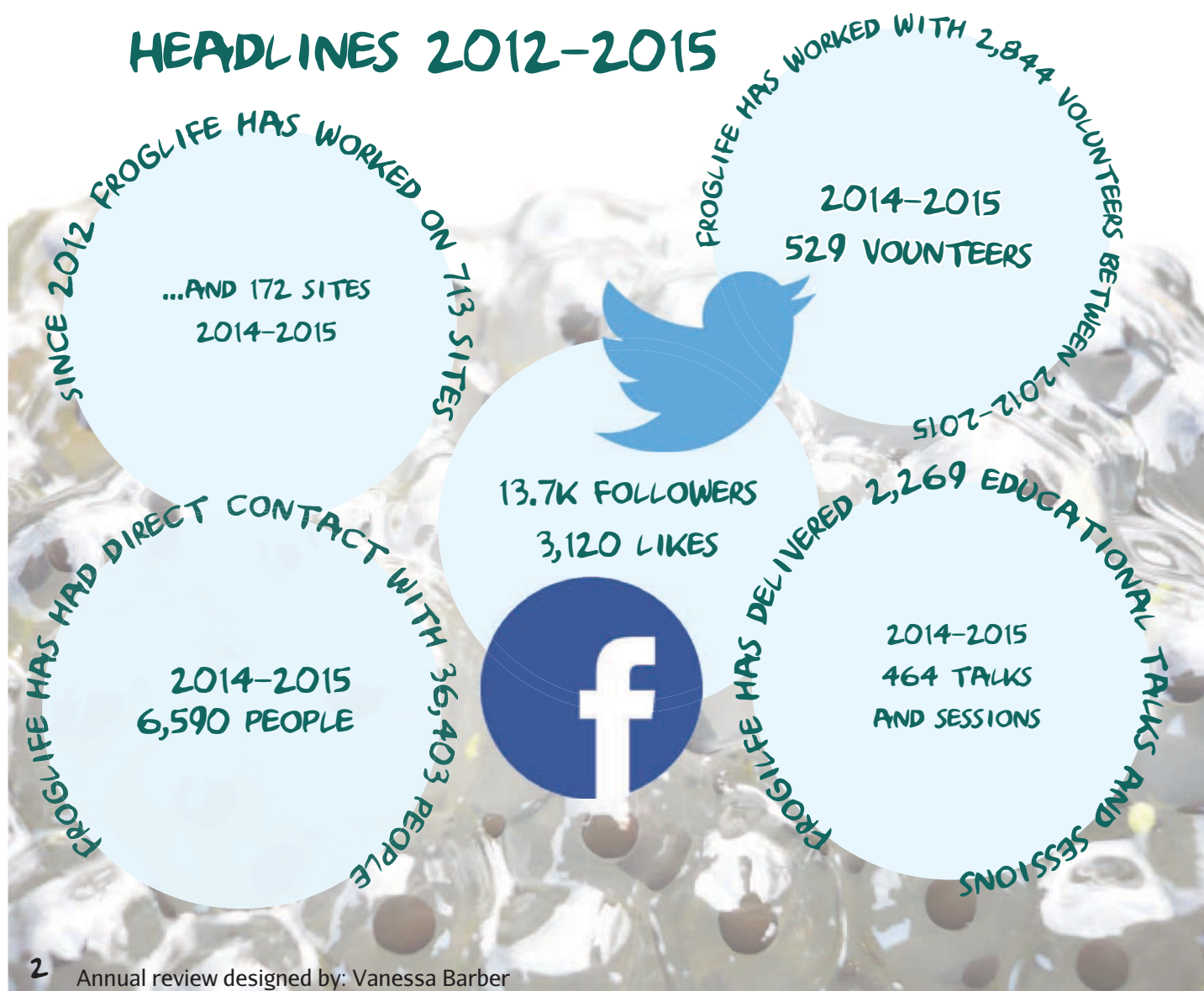


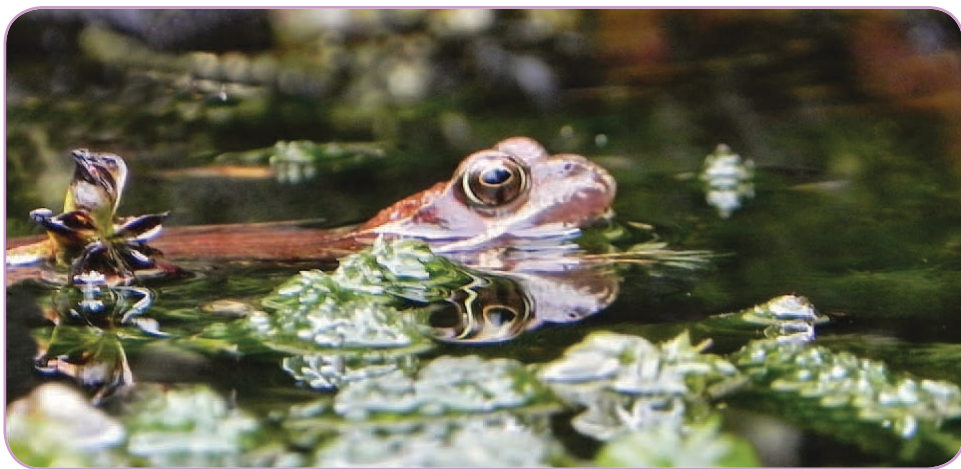
ANNUAL REVIEW
APRIL 2014 – MARCH 2015

CONTENTS

- 3: Welcome from the Chair and CEO
- 4-5: Making a difference to the lives of people
- 6-9: The Dragon Finder programmes
- 10-12: Making a difference in key landscapes
- 13: Making a difference through employment
- 14-15: Making a difference for reptiles and amphibians
- 16-17: Making a difference through effective communication
- 17: Making a difference on policy issues
- 18: Making a difference in the future
- 19: Making a difference financially
- 20: Thanks to donors and supporters

HEADLINES 2012-2015





WELCOME

FROM THE CHAIR AND CEO

Froglife has continued to be successful, it's not easy to achieve in this challenging economic climate, but we are very fortunate that we have funders that understand what we do and see just how much our staff, volunteers and trustees manage to achieve.

So here is a big thank you to all of those donors who have continued to fund our work. BBC Children in Need who for the third time have awarded us a three year grant for our Green Pathways Scheme and provided us with additional funding so that the project can be expanded into Fenland and Northamptonshire. Heritage Lottery Fund who currently fund our London and Scottish Dragon Finder projects, and this year started to fund a 4.5 year project in the East of England called River Nene Dragon Finder. Bromley Trust who have continued to give us

a much needed unrestricted grant that helps to support our education work. Esmée Fairbairn Foundation who have continued to support the salary costs for our Conservation Coordinator and Learning Coordinator and in addition have given us an unrestricted grant. City Bridge Trust who support our London Dragon Finder project through funding the salary costs for an administrator. Biffa Awards, SITA Trust and Cory Environmental Trust in Britain who have made our Living Water and Dragon Finder programmes possible by providing the co-funding, on several occasions. Glasgow Natural History Society and The Robertson Trust who have both provided us with ongoing support for our work in Scotland.

We have also been fortunate this year in securing funding

from new donors such as Young Start who made it possible for us to expand the Green Pathways Scheme into Glasgow. We have also received funding from a wide range of donors to provide much needed co-funding for our Scottish Dragon Finder project.

Finally let's not forget all of our partner organisations, councils, volunteers and friends who have provided us with funding and/or in-kind help, without all of this good will Froglife would certainly not be able to report such a successful year for the conservation of reptiles and amphibians.



Kathy Wormald
CEO

A handwritten signature in black ink, appearing to read 'Kathy Wormald'.



Linda Wenlock
Chair of the Trustees

MAKING A DIFFERENCE TO THE LIVES OF PEOPLE

Froglife is a dynamic organisation this is reflected in the way in which our projects evolve, with one project informing the next and introducing fresh activities.



For the past six years our Green Pathways scheme has been providing an outdoor learning experience for young people living in Peterborough who are vulnerable and/or disadvantaged. This project has been supported by BBC Children in Need and several other donors and we are pleased to say that BBC Children in Need have agreed to fund the project for a further three years. We have widened the scope of the project through increasing the age range and through expanding the project into new areas such as the Fenland and Northamptonshire.

A lovely outcome from this project is a set of video clips available on You Tube www.youtube.com/user/Froglifers with young people, teachers and volunteers talking about the change that the project has made to so many young lives.

"Froglife provided an excellent range of activities for a student who was presenting challenging behaviours in school. The programme was tailored to meet his interests and he looked forward to the sessions each week. Working with Froglife helped raise our student's self-esteem and

increase his confidence as the activities were things he could relate to and talk about knowledgeably to his peers on his return to school." Janet Dickman, Heltwate School, Teacher.

Thanks to the success of the Green Pathways Scheme in Peterborough we were fortunate in securing grants from Young Start, Scottish Natural Heritage, Robertson Trust and the Hedley Foundation to run the scheme in Glasgow.

Evaluating what is often



referred to as 'soft' outcomes is difficult but we appreciate that we need to be able to demonstrate that what we do is beneficial to wildlife and people. We have been working closely with specialists at the University of Hull to strengthen our data collection for evaluation purposes.

"Many thanks for all your help at short notice concerning K. I know that he got a lot out of it and visibly became less detached. This is a young person with very complex needs that has been difficult to engage and I feel that through the medium of your project you have been successful in engaging him" Andy Mortimore, Family Support Team, Peterborough City Council.

We are in the final year of our contract with Peterborough City Council Youth Offending Service (YOS). Froglife Active Conservation Team (FACT)

works with young people who have been given a community service order and young people who have committed a low level offence. Froglife has been working in partnership with the YOS for eight years and during this period our work has been commended by Ofsted and a total of 1,510 young people have contributed to our efforts to conserve amphibians and reptiles. They have improved a total of 25 sites in Peterborough including working in several schools on our Leapfrog Schools programme.

"We have worked with Froglife for many years, delivering indirect reparation to young people both on court orders and at a prevention level. I have always been very impressed with the work they have done and with the level and quality of their engagement with the young people referred to them who are often quite challenging young people to work with."

Iain Easton, Head of Services, Peterborough Youth Offending Service.

Our Leapfrog Schools programme has certainly taken a leap forward with plenty of schools keen to create an outdoor classroom. The scheme has proved so successful that we are also working with businesses and other organisations to create a pleasant outdoor conservation area for staff and service users to enjoy.

"Thank you for all your hard work with our B.Ed 3 students. It goes without saying that your presentation and pond dipping has enriched the student experience and given them food for thought about how important outdoor education is." Lecturer.

The employment of an Ecologist to work on Froglife Ltd contracts will help to increase our capacity and will enable us to work with Leapfrog Schools across the UK.



OUR DRAGON FINDER PROGRAMME HAS GONE FROM STRENGTH TO STRENGTH

Dragon Finder pulls together all of Froglife's strengths such as drawing people into nature conservation activities and delivering on the ground actions for reptiles and amphibians.



 work delivered  work planned

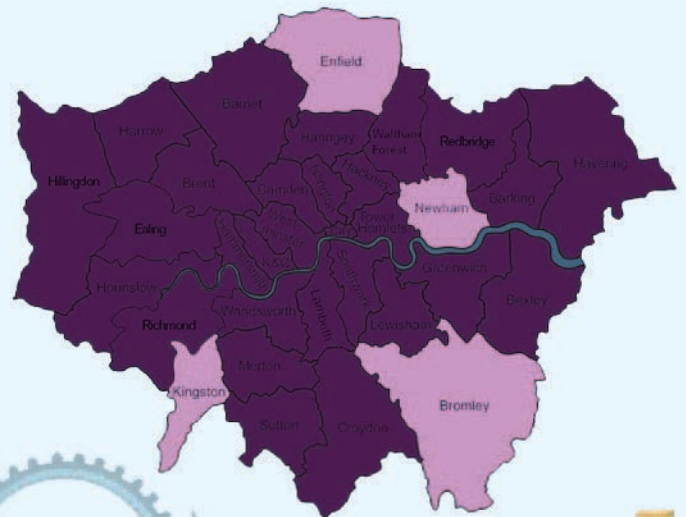
LONDON

Events delivered in 29 out of 33
London Boroughs so far

87 days of events in Year 1

60 days of events in Year 2

Total 127 event 6,652 people
engaged overall

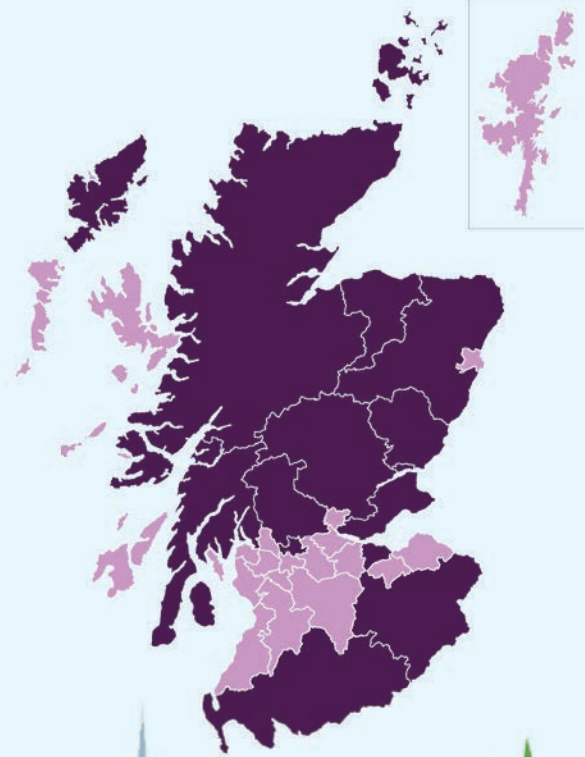


SCOTLAND

Activities in 14 out of 32 local authority areas

40 days of events in Year 1

>3000 people engaged



RIVER NENE

Working with 125 organisations

Visiting 91 venues

Directly benefiting 52,286 people



Although there are similarities across each of the three programmes such as Swimming with Dragons and Wildlife Workshops each programme also has a set of unique activities such as the creation of a Mapestry in the East of England. The Mapestry is a tapestry reflecting local heritage over a twelve month period along sections of the River Nene and its tributaries. It is proving incredibly popular, with 443 people attending the first 4 sessions.

Dragon Finder like all of our projects is working with individuals who experience barriers to taking part in wildlife conservation. In Peterborough and London we are working with Youth Offending Services and in London with the Women's Environment Network 'Spice It Up' programme. In Scotland we are working with Trellis, providers of therapeutic gardens for war veterans, children's homes and individuals with learning and/or physical disabilities. Trellis refer to Froglife's "winning Formula".



ABOVE: SWIMMING WITH DRAGONS, LONDON

In London 47 schools have contributed towards our Life under the Surface exhibitions with an amazing 1,463 school children creating props.

"Excellent environment for learning. Children relaxed and eager to make things and learn"

"All the activities were excellent and engrossed my 5 year old grandson. Very friendly helpful staff"



LEFT: PARTICIPANTS IN SCOTTISH DRAGON FINDER PLAY

RIGHT: BOY PARTICIPATING IN LONDON LIFE UNDER THE SURFACE WORKSHOP

Feedback from our Scottish Dragon Finder's Dragons on the Move activity has been very positive:

"My son learned a lot and really enjoyed the day"

"My favourite things was when I got to hold a toad"

"Great fun good hands on stuff for kids and grownups"

And likewise from the Dragon Tails activities:

"Class have been more aware of newts, frogs and tadpoles. As a class we are going to do a mini topic and survey"

"We loved making origami frogs! – Froglife helped me to understand life cycles better"

"I was looking for lizards this weekend"



LEFT: TAPESTRY - MONTH OF MARCH SECTION RIGHT: PARTICIPANTS AT A DRAGON DAY IN LONDON

For more information about all of our Dragon Finder activities and to attend an event please visit

WWW.FROGLIFE.ORG/DRAGONFINDER/EVENTS



MAKING A DIFFERENCE IN KEY LANDSCAPES

Pond habitats have declined by over 50% over the last century and a recent survey has found that 80% of existing ponds are either in a 'poor' or 'very poor' condition. Froglife's 'on the ground' approach is exactly what is needed to address this issue. Our track record in delivering high quality habitats for our species is exceptional. Since 2012 we have worked on 713 pond sites across the UK.

Geographic areas covered: London boroughs, River Nene and its tributaries (Northamptonshire, Lincolnshire, Cambridgeshire & Huntingdonshire), Sheffield, all regions of Scotland.

APRIL 2014 – MARCH 2015

71 PONDS CREATED

51 TERRESTRIAL HABITATS CREATED OR RESTORED

50 PONDS RESTORED



"Our Ranger has been out a couple of times to Avonglen to check for GCN. An egg search turned up eggs in Pond B and Pond C. A torch survey found juveniles and one female laying eggs in Pond D. So good news so far. Thank you for all your hard work on this site and at Muiravonside – I'm really pleased with the results"

Anna Perks, Biodiversity Officer, Falkirk Council

Scotland - Loon Braes Pond



Scotland - Angus Pond



Scotland - Alyth Pond



"Would definitely use Froglife again for any public engagement work or habitat enhancement for amphibians. Glasgow definitely the better for the five years of Froglife's work on the Glasgow Living Water Project."

David Garner, Natural Environment Officer (Biodiversity), Glasgow City Council.

Sheffield



River Nene



Sheffield



River Nene



Most of the co-funding for River Nene Dragon Finder has been secured against habitat work, this has meant that we have sped up the habitat work.

"Just a quick note to say how much we enjoyed the tremendous session last week at Sywell Country Park. We have been most impressed by what you have delivered for us here in Walgrave"

Simon Mead, Friends of Walgrave Country Park

MAKING A DIFFERENCE IN KEY LANDSCAPES

HAMPTON NATURE RESERVE

We have managed the Hampton Nature Reserve for several years, not only does it host the largest known population of great crested newt in the wild in Europe but it also provides us with excellent research opportunities to inform our evidence based conservation. This area of research analyses biodiversity improvements that happen as a result of our practical habitat work, especially pond creation and restoration. It includes impacts on a wide range of aquatic plants, aquatic invertebrates and of course, amphibians and reptiles. A large component of this work is based at Hampton Nature Reserve where we delivered our Second Life for Ponds project. The results of this project informed our latest large scale pond restoration project funded by Natural England through CES for Bearded Stonewort (*Chara canescens*), now in its fourth year. We are also investigating the application of new and more robust methods for large scale surveys of amphibian species.

BOARDWALKS NATURE RESERVE

This year we have taken on the management (on behalf of Peterborough City Council) of the Boardwalks Local Nature Reserve. Through our River Nene Dragon Finder project we have carried out extensive habitat work on the reserve. The reserve once had a thriving amphibian population, particularly common toads, but unfortunately they have declined rapidly, hopefully this habitat work will help the populations to rally around. Boardwalks also offers us more opportunities to encourage public engagement in the site, it has public access and is near to the city centre making it easy for people to visit the site and attend our events.

"Project virtually now completed, all to a high standard and with an excellent working relationship between our organisations."

James Fisher, Wildlife Officer, Peterborough City Council

MAKING A DIFFERENCE THROUGH EMPLOYMENT

Every year Froglife runs lots of volunteer training days resulting in hundreds of volunteers being trained in species identification and habitat management. Since 2008 we have trained 2,844 people and in 2014/15 alone we trained 464. This sort of training is invaluable and volunteering certainly does help many conservationists to find employment within the sector. However, not everyone has the resources (time and money) to be able to volunteer

or to be able to do sufficient volunteering to gain the experience that is needed. In order to address this Froglife has started to offer paid trainee placements. During 2014/15 we have taken on two trainees, one working on our Scottish Dragon Finder project and the other on our Peterborough Green Pathways Scheme. Later in 2015 we will be taking on another trainee placement for our River Nene Dragon Finder project.



MAKING A DIFFERENCE FOR REPTILES AND AMPHIBIANS

TOADS ON ROADS: KEY STATISTICS

32,373 TOADS RESCUED.

1,987 TOADS REPORTED DEAD ON ROAD



AMPHIBIAN DISEASES IN THE UK

Froglife has been involved in citizen science projects and research relating to amphibian disease since the 1980s. This area of work has grown as the conservation community has become increasingly concerned about the threats faced, particularly by frogs, due to disease. Our work has included involvement in research into ranaviruses including several projects with the Institute of Zoology (IOZ) in London and the University of Exeter. We work with members of the public finding dead or diseased frogs in their gardens, offering advice and linking them in to wider research into disease. We are partners in the Garden Wildlife Health project with the IOZ, the British Trust for Ornithology (BTO) and the Royal Society for the Protection

of Birds (RSPB). "Thanks so much to your great efforts, we have received a further 10 amphibian reports over the last two weeks - a conversion rate of 50%". Lydia Franklins, Wildlife Veterinarian, Zoological Society of London.

Road mitigation projects for amphibians and reptiles:

Having managed the national Toads on Roads project for many years, our research in this area includes several different projects. We have developed an automated monitoring system for small wildlife tunnels through a project funded by Natural England, with recent support from the People's Trust for Endangered Species (PTES) through an internship. We have also been involved in modelling road mortality

hotspots for amphibians in selected UK areas. Since 2013 Dr. Silviu Petrovan (Froglife Conservation Coordinator) has been co-supervising a PhD project with Dr. Phil Wheeler from the University of Hull and Dr. Alistair Ward from FERA at York. This project, funded by Natural England, is investigating the effectiveness of road mitigation structures for the great crested newt (*Triturus cristatus*).

Our research work has gained a lot of interest with our Conservation Coordinator being asked over the past year to present at three international conferences and to deliver two professional training courses on wildlife monitoring techniques, one for Natural England and the other for Wildlife Trust consultants.

"I listened with interest to your presentation at the Wildlife and Transport Infrastructure Symposium earlier this week. You gave Staffordshire County Council invaluable help when planning the great crested newt crossings, we are now planning monitoring and would like Froglife to be involved, particularly if you would like to include the site in research of amphibian use of tunnels."

Principal Ecologist,
Staffordshire County Council.

Froglife is a founding member of the European Network for the Protection of Amphibians and Reptiles from Transport Systems (ENPARTS), working with many partners on promoting best mitigation and prevention practices and collaborative research across Europe on road crossings.

As part of our broader international strategy, Froglife has collaborated with the University of Glasgow's Trinidad Expedition to help raise funds for work to survey the critically

endangered golden tree frog, found on only two mountain tops in Trinidad, using the new method of eDNA. Since previous survey methods for this frog damaged its specialised bromeliad tank habitat, we hope that eDNA will provide a satisfactory and non-harmful method.

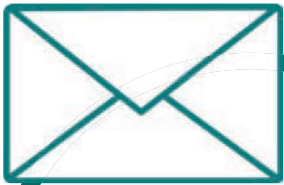
For the first time Froglife in collaboration with students at Glasgow University ran a crowd funding appeal to help fund this work, a total of £2,000 was raised.

GOLDEN TREE FROG (PHYTOTRIADES AURATUS)



MAKING A DIFFERENCE THROUGH EFFECTIVE COMMUNICATION

Froglife manages a very active enquiry service with enquiries received through our website, on social media and by phone. The majority of our enquiries are from people wanting to help amphibians and reptiles and as such we put great store on answering every single enquiry and directing individuals to further information and our App. We receive worldwide enquiries and will always endeavour to answer them.



**478 EMAIL ENQUIRIES
HUNDREDS VIA SOCIAL
MEDIA AND BY PHONE**



**13.7K FOLLOWERS
3,120 LIKES**



I found this lizard and caught him in my backyard I live in Dallas Texas and I would like to know what kind of lizard it is?



Thank you very much for your time and I appreciate your response. Jeremy



Most likely it is a Texas spiny lizard or a related species, in the same genus, *Sceloporus*. It would be best if you release it back where you caught it, wild-caught lizards don't make great pets as they suffer a lot from stress.

More on the species here: www.herpssoftexas.org/content/texas-spiny-lizard



MAKING A DIFFERENCE THROUGH EFFECTIVE COMMUNICATION

Our website is packed with information and we receive many positive comments about how attractive it looks and also how useful it is visit www.froglife.org. We produce a newsletter, Natterchat, twice a year. Each edition is themed to cover a topical issue and we feature guest writers.

Nothing quite matches meeting people face to face and our projects work directly with thousands of people but additionally we make sure that we are out and about as much as possible. Last year, like every other year, Froglife was present at several national events whilst senior staff members presented the work

of Froglife at conferences and represented Froglife's point of view at meetings.

"Great to be working with Jenny on wildlife festival, she has been such a wonderfully positive and proactive partner, thank you!"
Clare Freeman, Landscape Manager, Nene Park Trust.



Our two main publications Just add Water and Urban Tails were revamped this year and remain as popular as ever.



Above: James McAdie, River Nene Dragon Finder Project Manager discussing vital pond restoration works on ITV Anglia News

MAKING A DIFFERENCE ON POLICY ISSUES

We engage as much as we can in relevant policy issues, such as advising the London Assembly's Environment Committee.

"I would like to thank you on behalf of the London Assembly's Environment

Committee for attending our meeting on 3 March 2015. The Committee found it very helpful to have a range of views and expertise represented at the meeting." Stephen Knight AM, Chair of the Environment Committee.

We are a very active member of Scottish Environment LINK, a collective of organisations that lobby the Scottish Government on conservation and environment issues. We have eight Scottish MEPs who have signed up as species champions.

MAKING A DIFFERENCE IN THE FUTURE



It is important to know that our work is making a positive impact on the conservation agenda. It is easier to evaluate physical habitat work and the impact on species, and we do this through an extensive monitoring programme. However, evaluating the impact of our work on people can be trickier. We collect a lot of data on project participants but finding ways in which to evaluate this to provide quantitative assessments has been the subject of much discussion at Froglife. This led us in 2014 to set up a

partnership with the University of Hull to assess the data that we currently collect. This initial assessment was completed in 2015 and we are now working with the university to tailor our evaluation processes for each project, this work is ongoing, but we hope that we will be able to contribute an article/s to educational journals about the impact of our work over the next year or so. We are also setting up an education working group to keep assessing this area of work.

2015/16 will see the launch of our Sheffield Living Water Phase 2 project, this time we

are involving local schools in a 'Taddies in the Classroom' activity.

We are in discussions with Belfast, Antrim and Derry in Northern Ireland to develop a Living Waters project there.

During the next year we will have publications on our research work and we will also have strengthened our on-line data reporting systems, the App will have been redeveloped to reflect changes in technology and we will have started the development phase for our next Dragon Finder project.

MANY THANKS TO ALL OUR SUPPORTERS AND DONORS

FROGLIFE IS SUPPORTED BY:

Angus Environmental Trust - BBC Children in Need - Better Together Volunteers - Biffa Awards
-The Bromley Trust -
Central Scotland Forest Trust - City Bridge Trust - Clark Bradbury Charitable Trust - Cory
Environmental Trust - Defra -
Ernest Kleinwort Trust - The Ernest Cook Trust - The Esmée Fairbairn Foundation - The
Heritage Lottery Fund-
Garfield Weston Foundation - Glasgow Natural History Society - GrantScape - Lee Valley
Regional Park Authority -
London Boroughs - Mackintosh Foundation - Mears Ltd - Natural England - J Paul Getty Jnr
Charitable Trust -
Northamptonshire County Council - O&H Hampton Ltd - Patagonia - Peterborough City Council -
Peterborough Youth Offending Services - The Robertson Trust - Scottish Natural Heritage -
SITA Trust - SSE -
Sheffield City Council - Staffordshire County Council - Turcan Connell - University of Glasgow -
Western Riverside Environment Fund - William Dean Trust - Young Start.

COPORATE SUPPORTERS:

Animal Friends Pet Insurance - Birdsong Charity Consulting - CSS Copiers - Environment Jobs -
Water Gems

TRUSTEES:

Lin Wenlock (Chair), Roger Downie (Vice Chair), Frank Clark, Heather Jones, Richard Donoyou
and Inez Smith.

VOLUNTEERS:

And finally, but certainly not least, a big thank you to all of our volunteers especially all those
toad patrollers who did such a terrific job again this year.

WWW.FROGLIFE.ORG



Froglife is a Campaign tile for The Froglife Trust

Registered Charity No. 1093372 (in England and Wales) and SC041854 (in Scotland)

Registered Company No. 4382714 in England and Wales