

### Interpretation board locations:



- B Grass snakes
- E Pond & tree work
- C Toads
- F Great crested newts
- D Frogs
- A The nature reserve

### Reptile found at Boardwalks:



Grass snake

### Counting wildlife:

You can record any reptiles or amphibians you saw on our free Dragon Finder app!

### 'What am I?' waymarker post images:

- 1 Great crested newt
- 2 Frog
- 3 Dragonfly
- 4 Diving beetle
- 5 Swan
- 6 Grass snake
- 7 Toad
- 8 Rabbit
- 9 Butterfly
- 10 Snail



### Toadspawn is laid in:

- B) strings



### Wildlife in the pond:

Why not tell us what you saw on Twitter @froglifers or on Facebook /froglife

### Green woodpeckers:

Did you see or hear any? They look like this:



### Trees in Creighton's Wood:

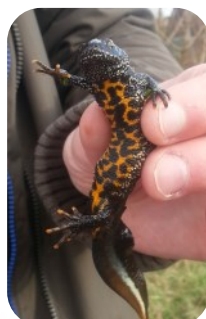
Oak, Silver birch, Maple, Hazel, Hawthorn, Willow, Alder, Ash, Lime, Cherry, Holly

### Animal you should stop going in ponds:

Dogs - *their paws disturb the mud, making the pond cloudy and releasing nutrients into the water. This encourages algal blooms and stops light getting through the water to the plants below.*

### Frogs escape from predators by:

Jumping using their long, stripy back legs!



### A great crested newt's belly is:

Orange (with black markings) - *each newt's belly pattern is unique, just like our fingerprints!*

