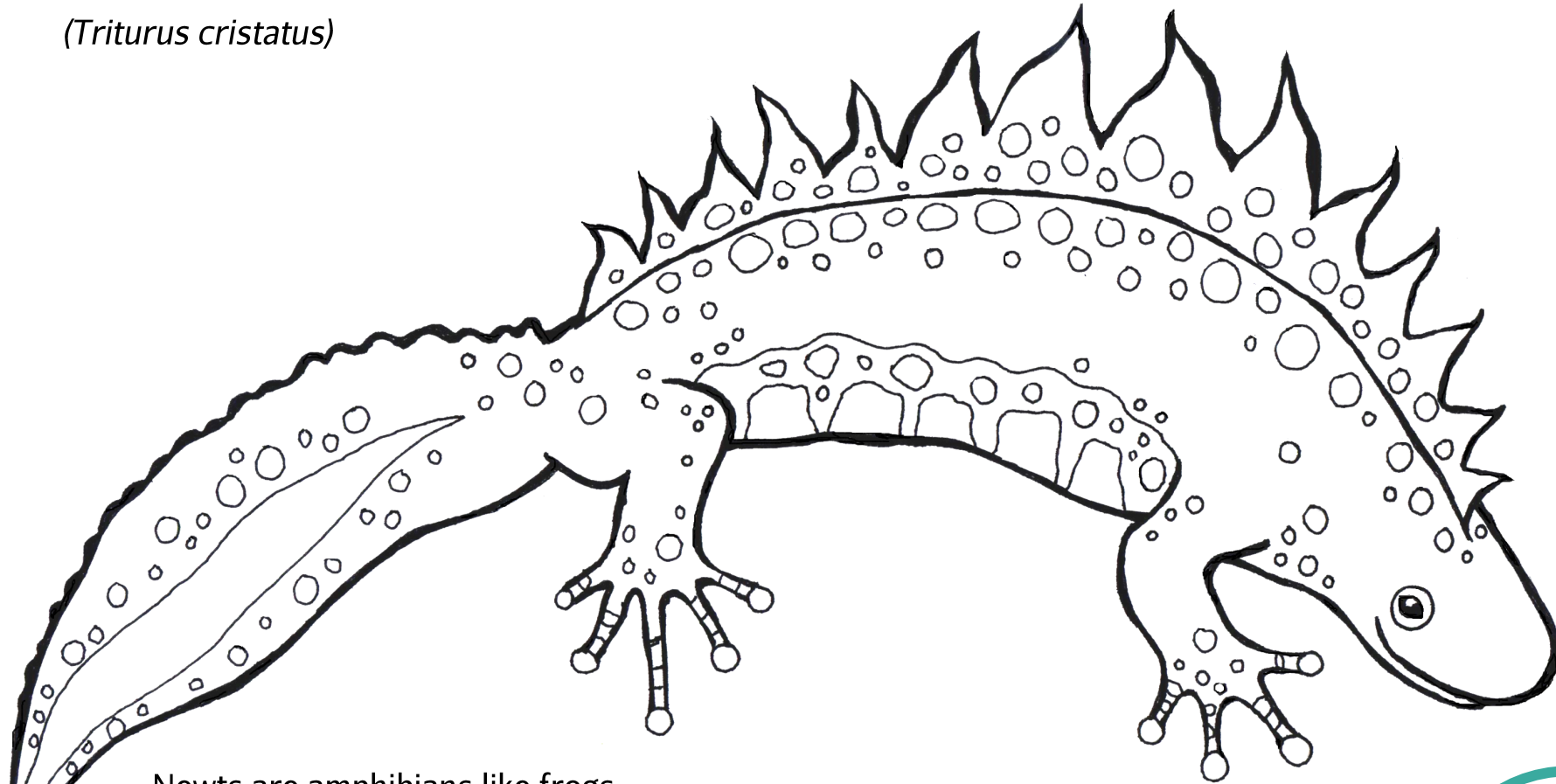


Great Crested Newt

(Triturus cristatus)



- Newts are amphibians like frogs
- They start life as eggs in the water
- Little newt larvae (tadpoles) hatch out and swim around in a pond
- They then grow legs and turn into baby newts called efts
- Great crested newts are black and have bright yellow bellies with big black blotches



Illustration by SamTaylor

Froglife is a UK wildlife charity committed to the conservation of amphibians and reptiles - working with people, enhancing lives together for a healthier planet. Find out more about our education projects and activities at www.froglife.org